

# DIVYA JYOTI

home for gracious living





Divya Jyoti is an elegant compilation of Residences that are a perfect blend of gracious living, comfort and convenience. Ambitious Iconic & Dynamic

These homes provide a unique mix of style and perfection offering a life seldom seen in the vicinity of Durgapur



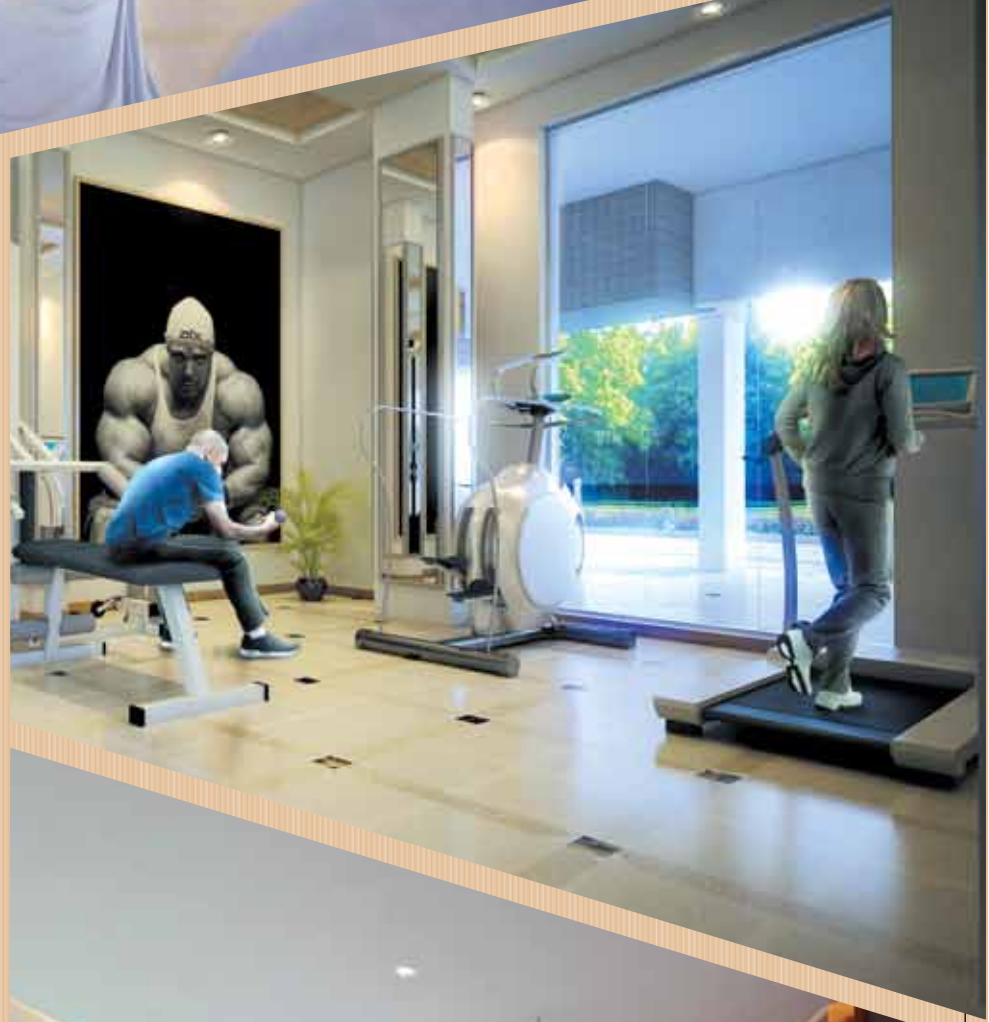




## amenities

- AC Community Hall
- Modern Multi Gym
- Amphitheatre
- Grand Open-to-Sky Ground Floor Lobby
- Landscaped Garden with Kid's Play Area
- Games Room
- Adequate capacity standby Generator for common area and apartments\*
- Closed circuit T.V. at the ground floor.
- Intercom connectivity
- 24 hrs Security
- Two Lifts in each Building
- Visitors Car Parking

\* at extra cost







## specifications

<b>STRUCTURE</b>	R.C.C frame structure over pile foundation.
<b>ELEVATION</b>	A unique blend of ornamental and modern architecture.
<b>EXTERIOR</b>	Blending of weather proof paint and other decorative finish.
<b>INTERIOR</b>	Conventional brick work with POP finish.
<b>ELEVATOR</b>	Two elevator in each block of reputed brand.
<b>FLOORING</b>	Vitrified tiles in living, dining, kitchen and all bedrooms.
<b>KITCHEN</b>	Granite top platform with stainless steel sink of reputed make Glazed tiled dado upto 2ft height above the platform.
<b>TOILET</b>	Anti skid tiles on floor. Ceramic tiles upto door height. Provision for hot and cold water supply in each toilet. European style water closet. Elegant CP fitting.
<b>DOORS</b>	Entrance- flush door with teak veneer polish. Good quality flush doors in all other rooms.
<b>WINDOWS</b>	Anodized Aluminium windows.
<b>HARDWARE</b>	Stainless steel hardware fittings of reputed make.
<b>ELECTRICAL</b>	Copper wiring in concealed conduits. Telephone, TV cable point in living/dining. Modular switches.
<b>WATER SUPPLY</b>	Adequate water supply.





# Site Plan



ENTRANCE

EXIT

12200 MM. WIDE ROAD

4000 MM. WIDE DRIVE WAY

4000 MM. WIDE DRIVE WAY

4000 MM. WIDE DRIVE WAY

4000 MM. WIDE DRIVE WAY

BLOCK - A

BLOCK - B

COMMUNITY HALL

SECURITY

SERVICES

1800 MM. WIDE CORRIDOR

ELECTRICAL ROOM

V.SHAFT

LIFT

LIFT

V.SHAFT

W.C.

W.C.

W.C.

V.SHAFT

UP

UP

UP

UP

UP

UP

UP

UP

UP

UP

UP

UP

UP

UP

UP

UP

UP

UP

UP

UP

UP

UP

UP

UP

UP

UP

UP

UP

UP

UP

UP

UP

UP

UP

UP

UP

UP

UP

UP

UP

UP

UP

UP

UP

UP

UP

UP

UP

UP

UP

UP

UP

UP

UP

UP

UP

UP

UP

UP

UP

UP

UP

UP

UP

UP

UP

UP

UP

UP

UP

UP

UP

UP

UP

UP

UP

UP

UP

UP

UP

UP

UP

UP

UP

UP

UP

UP

UP

UP

UP

UP

UP

UP

UP

UP

UP

UP

UP

UP

UP

UP

UP

UP

UP

UP

UP

UP

UP

UP

UP

UP

UP

UP

UP

UP

UP

UP

UP

UP

UP

UP

UP

UP

UP

UP

UP

UP

UP

UP

UP

UP

UP

UP

UP

UP

UP

UP

UP

UP

UP

UP

UP

UP

UP

UP

UP

UP

UP

UP

UP

UP

UP

UP

UP

UP

UP

UP

UP

UP

UP

UP

UP

UP

UP

UP

UP

UP

UP

UP

UP

UP

UP

UP

UP

UP

UP

UP

UP

UP

UP

UP

UP

UP

UP

UP

UP

UP

UP

UP

UP

UP

UP

UP

UP

UP

UP

UP

UP

UP

UP

UP

UP

UP

UP

UP

UP

UP

UP

UP

UP

UP

UP

UP

UP

UP

UP

UP

UP

UP

UP

UP

UP

UP

UP

UP

UP

UP

UP

UP

UP

UP

UP

UP

UP

UP

UP

UP

UP

UP

UP

UP

UP

UP

UP

UP

UP

UP

UP

UP

UP

UP

UP

UP

UP

UP

UP

UP

UP

UP

UP

UP

UP

UP

UP

UP

UP

UP

UP

UP

UP

UP

UP

UP

UP

UP

UP

UP

UP

UP

UP

UP

UP

UP

UP

UP

UP

UP

UP

UP

UP

UP

UP

UP

UP

UP

UP

UP

UP

UP

UP

UP

UP

UP

UP

UP

UP

UP

UP

UP

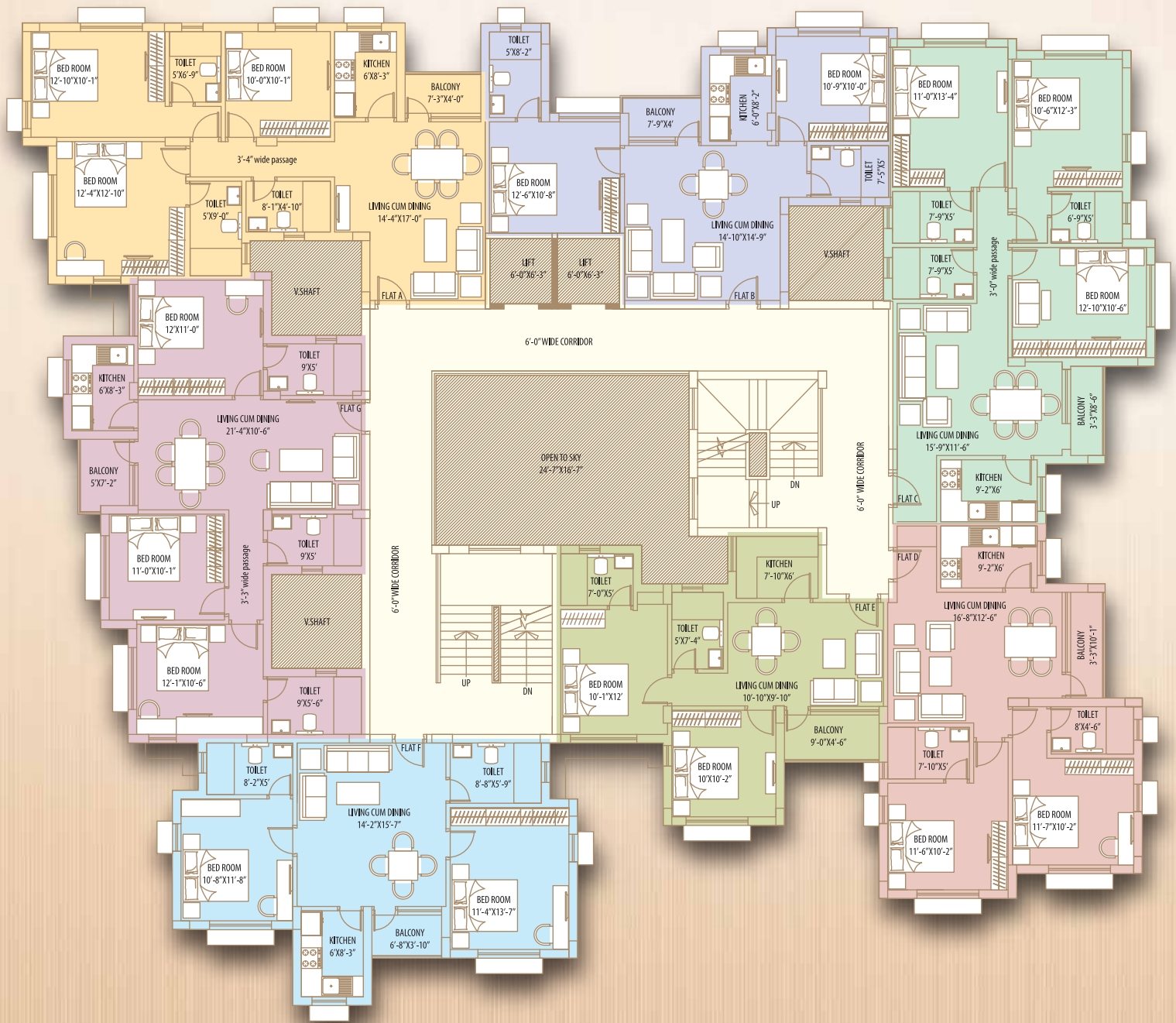
UP

UP





## Typical floor Plan Block- A

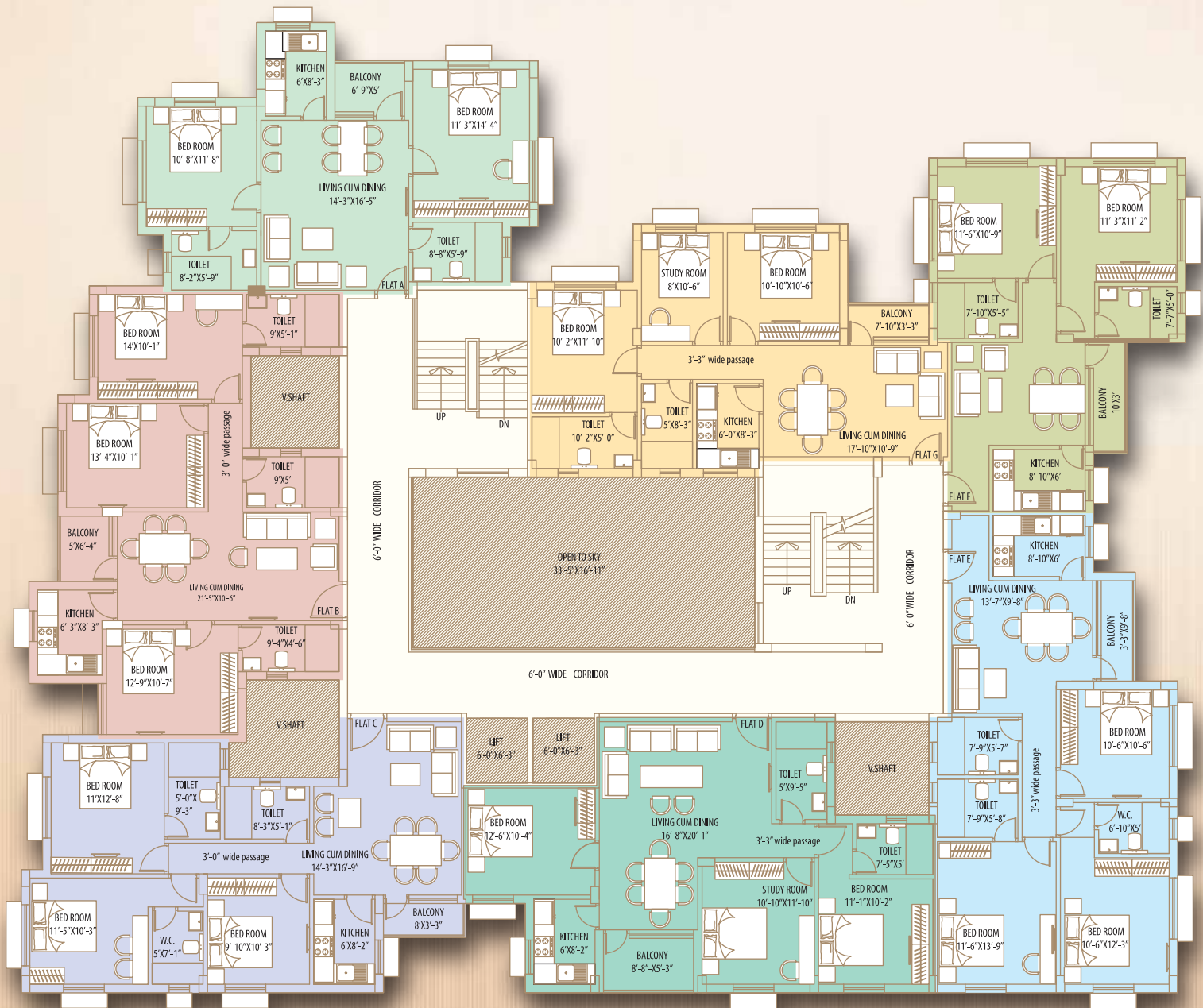


### Block- A

FLAT	Flat A	Flat B	Flat C	Flat D	Flat E	Flat F	Flat G
BHK	3 BHK	2 BHK	3 BHK	2 BHK	2 BHK	2 BHK	3 BHK
Area	1267 sqft.	926 sqft.	1272 sqft.	952 sqft.	830 sqft.	987 sqft.	1255 sqft.

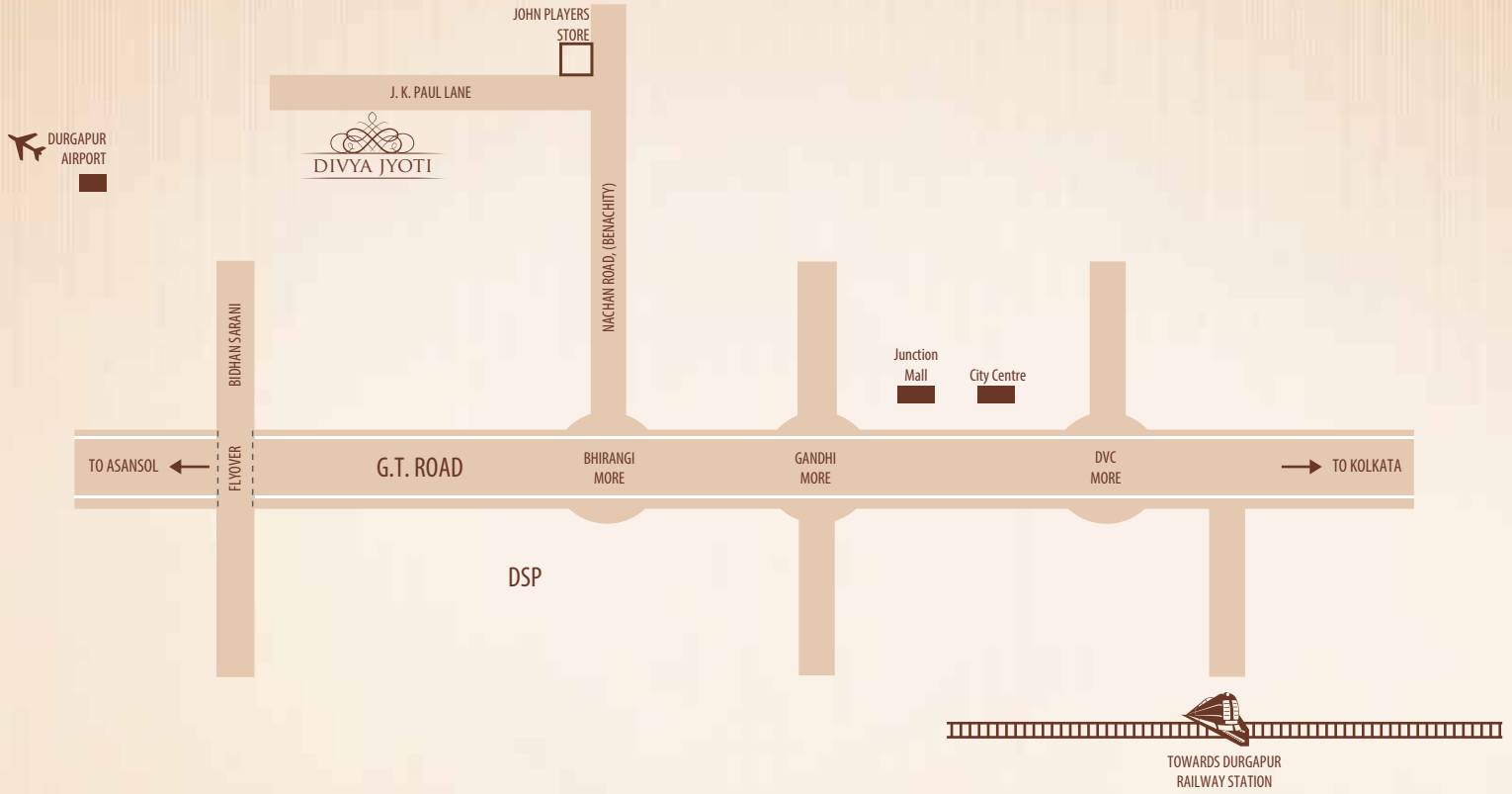


## Typical floor Plan Block- B



### Block- B

FLAT	Flat A	Flat B	Flat C	Flat D	Flat E	Flat F	Flat G
<b>BHK</b>	2 BHK	3 BHK	3 BHK	3 BHK	3 BHK	2 BHK	3 BHK
<b>Area</b>	1028 sqft.	1310 sqft.	1217 sqft.	1251 sqft.	1221 sqft.	886 sqft.	1046 sqft.



Daily Market	-	0.50 Kms	City Centre	-	4.00 Kms
Bhirangi More	-	1.80 Kms	Railway Station	-	11.00 Kms
DSP	-	3.00 Kms	Proposed Airport	-	11.00 Kms



Site Address : J. K. Paul Lane, Benachity, Durgapur



**Project of**  
Ankur Group  
Kolkata

[www.ankurkol.com](http://www.ankurkol.com)

E-mail : [divyajyoti@ankurkol.com](mailto:divyajyoti@ankurkol.com)

**Developed by**

Divya Distributors  
Room#206/4, 2nd Floor,  
10 Clive Row, Kolkata-700001

**Architect**

Design Cell  
Kolkata

**Structural Consultants**

SPA Consultants Pvt Ltd  
Kolkata

**Marketed By**



[www.indiahomeplus.com](http://www.indiahomeplus.com)

E-mail : [divyajyoti@indiahomeplus.com](mailto:divyajyoti@indiahomeplus.com)

**Call : 98362 90002**

Note : All details in this booklet are for easy information and concept purpose only, and do not form part of the agreement. This documents is tentative and developers reserve the right to make variations and modification.